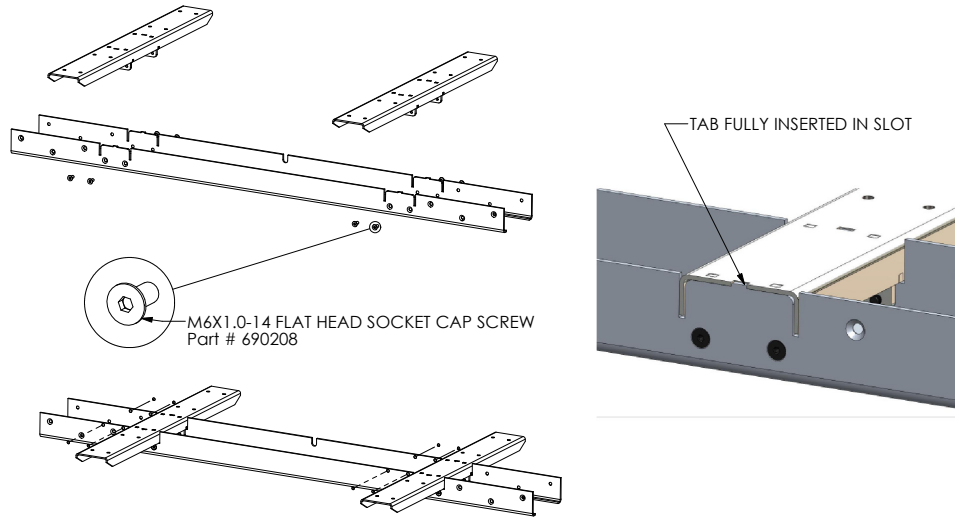


LVWR7/LVWR9 ASSEMBLY INSTRUCTIONS

STEP # 1

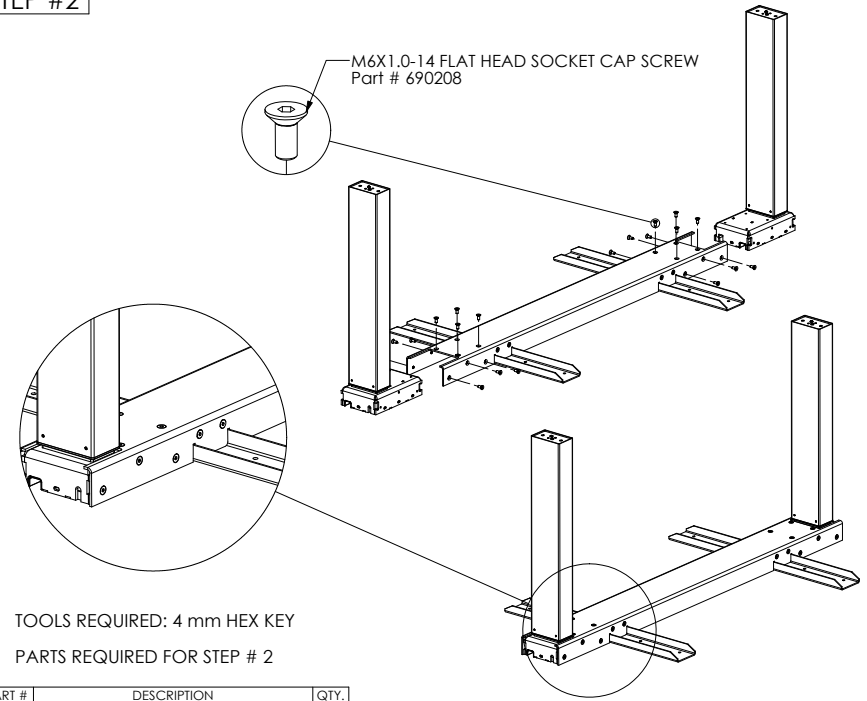


TOOLS REQUIRED: 4 mm HEX KEY

PARTS REQUIRED FOR STEP # 1

PART #	DESCRIPTION	QTY.
690208	M6X1.0-14 FLAT HEAD SOCKET CAP SCREW	8

STEP # 2

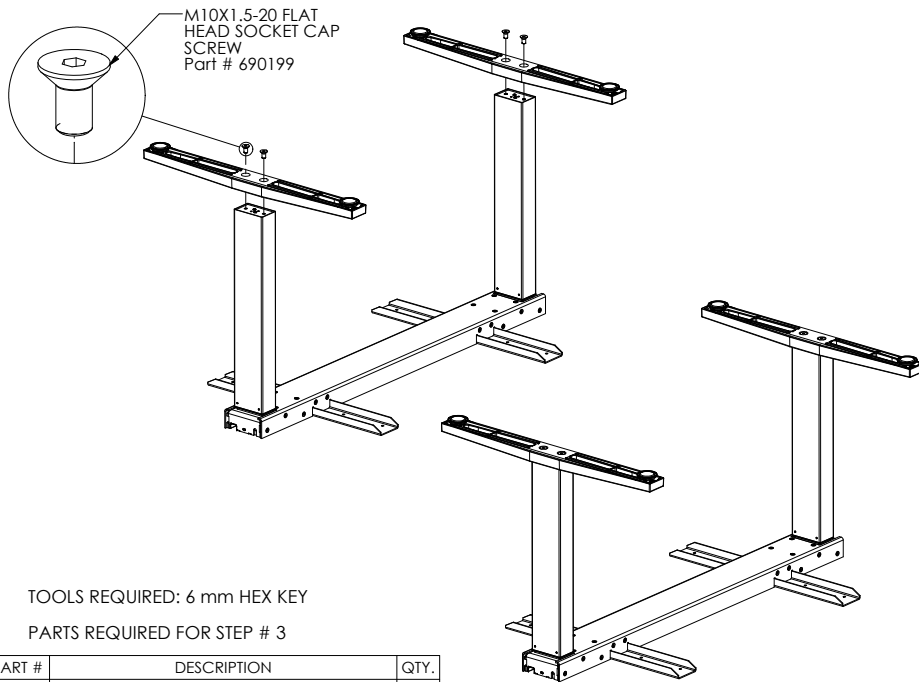


TOOLS REQUIRED: 4 mm HEX KEY

PARTS REQUIRED FOR STEP # 2

PART #	DESCRIPTION	QTY.
690208	M6X1.0-14 FLAT HEAD SOCKET CAP SCREW	20

STEP # 3

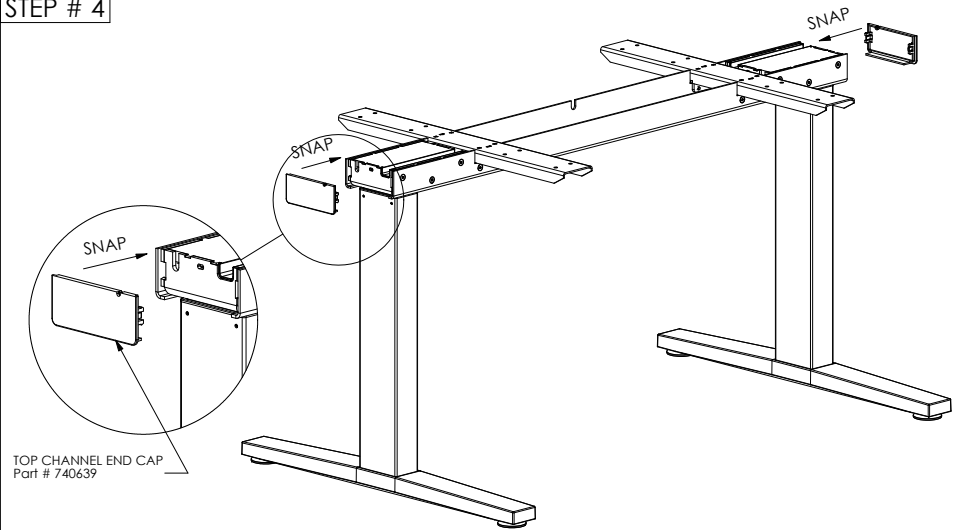


TOOLS REQUIRED: 6 mm HEX KEY

PARTS REQUIRED FOR STEP # 3

PART #	DESCRIPTION	QTY.
690199	M10X1.5-20 FLAT HEAD SOCKET CAP SCREW	4

STEP # 4



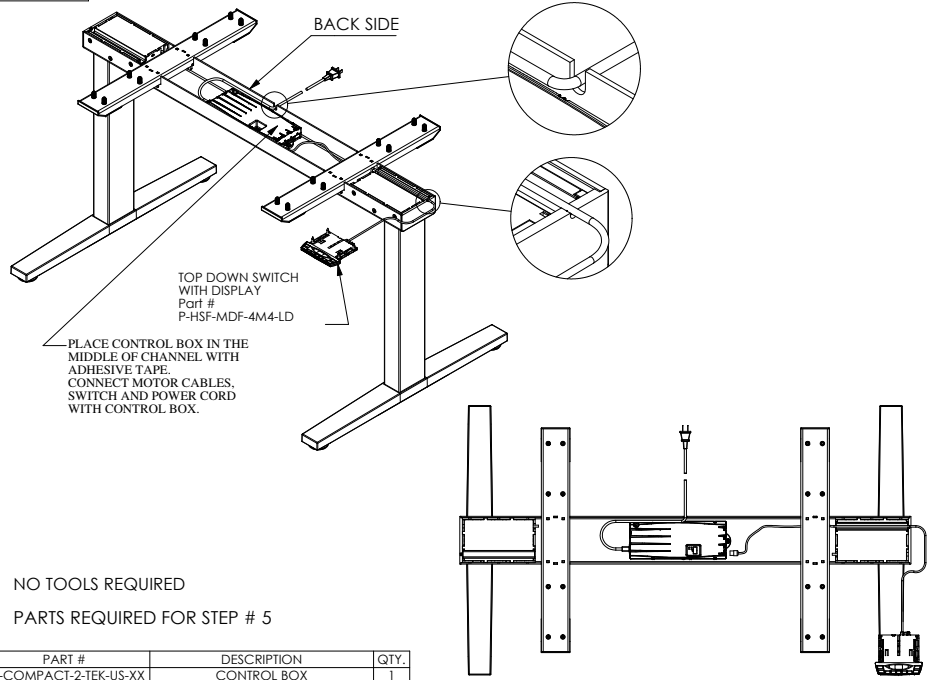
NO TOOLS REQUIRED

PARTS REQUIRED FOR STEP # 4

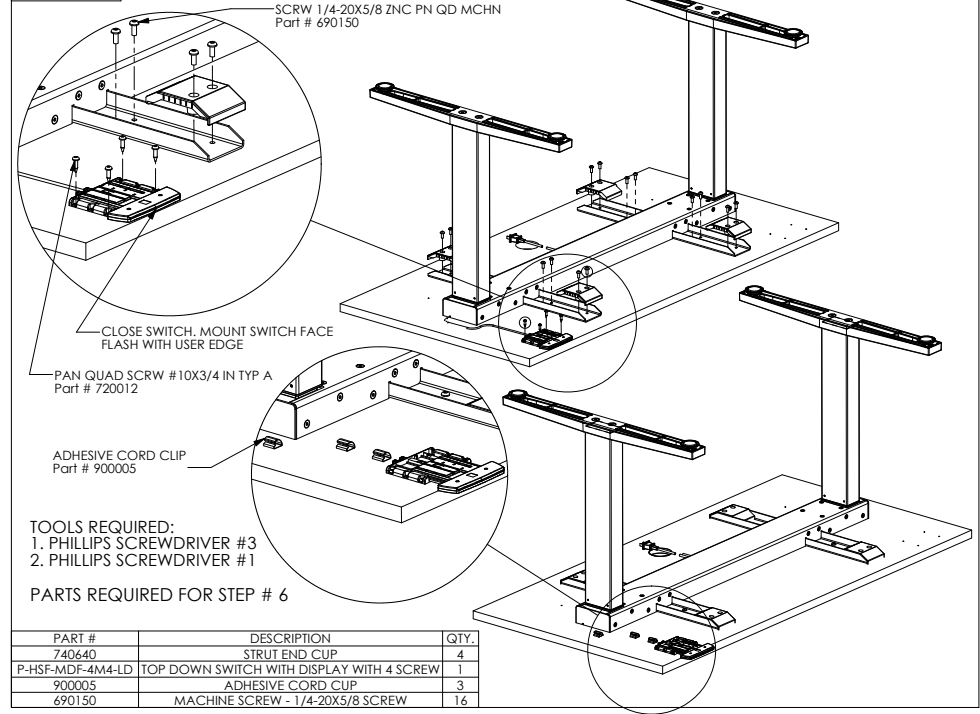
PART #	DESCRIPTION	QTY.
740639	TOP CHANNEL END CAP	2

LVWR7/LVWR9 ASSEMBLY INSTRUCTIONS

STEP # 5



STEP # 6



STEP # 7

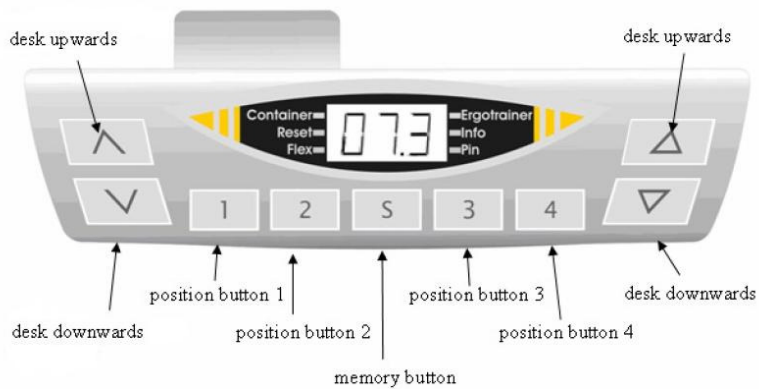


**IMPORTANT: READ INSTRUCTIONS BEFORE OPERATING TABLE**

**HOW TO ADJUST THE TABLE:**

**General Operation:**

Press and hold the DOWN or UP arrow button to move the table to the desired height.



**Memory Positions:**

1. Move the desk to the position you want to store. The display reads the actual height of the desk (e.g. 30").
2. Press the **S** button. The display reads **S -**.
3. Press the position button of choice (e.g. 2). The display reads **S 2**.
4. Now the height is stored on the chosen position button. The saving operation is confirmed with a double-click sound and after approximately 2 seconds the stored height will be displayed.

- To move to the desired positions saved in memory, press and hold the desired key (1 , 2 or 3 as required). The table automatically stops when the pre-set height is reached.
- Any or all of the stored memory heights can be changed at anytime by following steps 1-4.

**SETUP INSTRUCTIONS AND TROUBLESHOOTING TIPS**

**Initialization Procedure:**

When you are using the table for the first time, you must INITIALIZE the table legs.

- Adjust the table to the lowest position and release the switch.
- Press and hold the DOWN button for 10 seconds. The legs should move up and down a small distance to indicate that the command has been received.
- Adjust the table to the highest position and back down to the lowest position *twice* in order to establish the full range of the table. The table is now ready for normal use.

**Troubleshooting:**

- If the table legs become un-level you must REINITIALIZE the system as described above.
- Ensure there are no obstructions in either the up or down direction.
- If the legs are not operating properly, it may be necessary to press the DOWN button twice to start the initialization process.
- If the display shows E01, you must REINITIALIZE the system. If you see other E## codes, contact your facilities representative for assistance.

**Monthly Maintenance:**

- It is recommended that the table be REINITIALIZED once every month.